



VIESCA  
TOSCANA

## VILLA DUE TORRI

Villa Due Torri stands out within the Estate for its two characteristic and unique turrets. The carefully designed and maintained indoor spaces are very spacious and bright.

On the ground floor a service bathroom, a large kitchen, a double living room with sitting and dining area, but also a loggia with lounge area and dining table for unforgettable nights under the star-lit Tuscan sky.

On the top floor are four double bedrooms with en-suite bathrooms, and also a living room. The attic of the Villa, from which



guests can enjoy breathtaking views, also includes an additional room with private bathroom.

Villa Due Torri, which is surrounded by a private garden featuring an infinity pool, offers great views of the Tuscan countryside.

Additional guests may stay at the adjacent Due Torri Cottage, an finely-renovated barn with three double bedrooms with en-suite bathrooms.

**VIESCA**  
TOSCANA





## GENERAL INFORMATION

---

**Up to 16**                      **330**  
Guests                              M<sup>2</sup>

**5 + 3 Double**                      **5 + 3**  
Rooms                              Bathrooms

---

- Pool m 12 × 6 | deep m 1,5
- Equipped loggia
- Barbecue
- Private garden
- Private parking

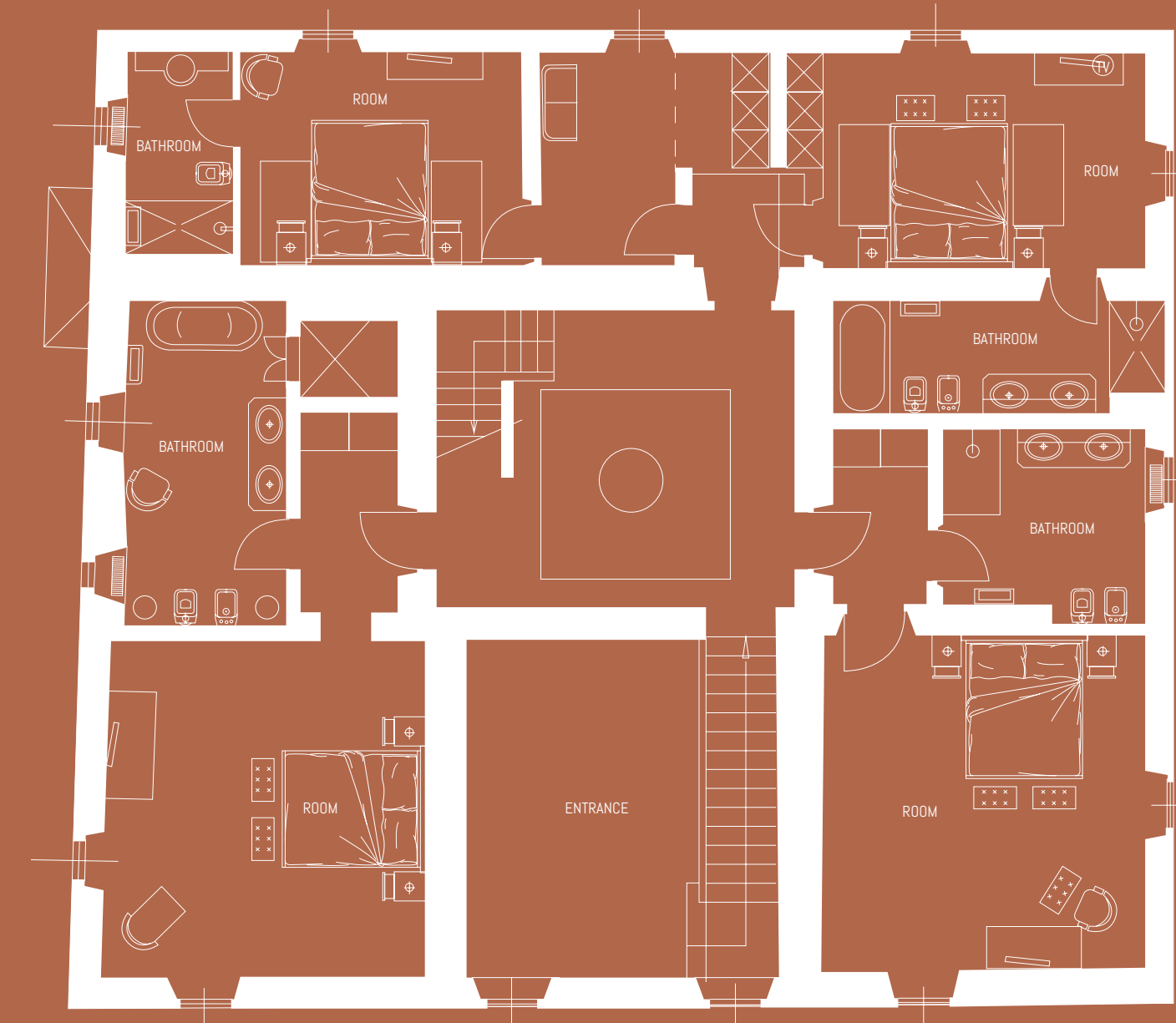
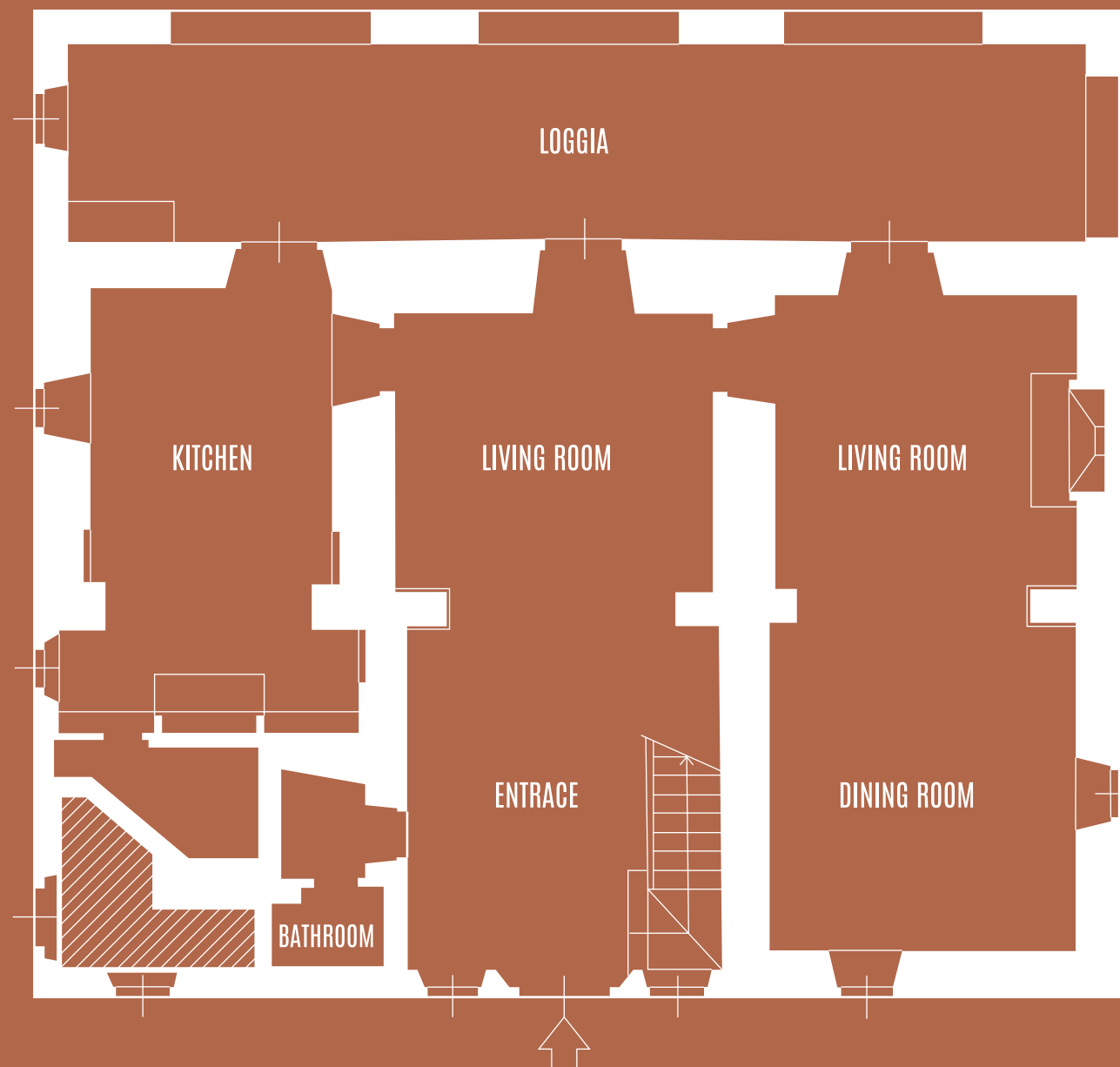






## GROUND FLOOR OF THE VILLA

- Kitchen
- Living room
- Service bathroom
- Loggia



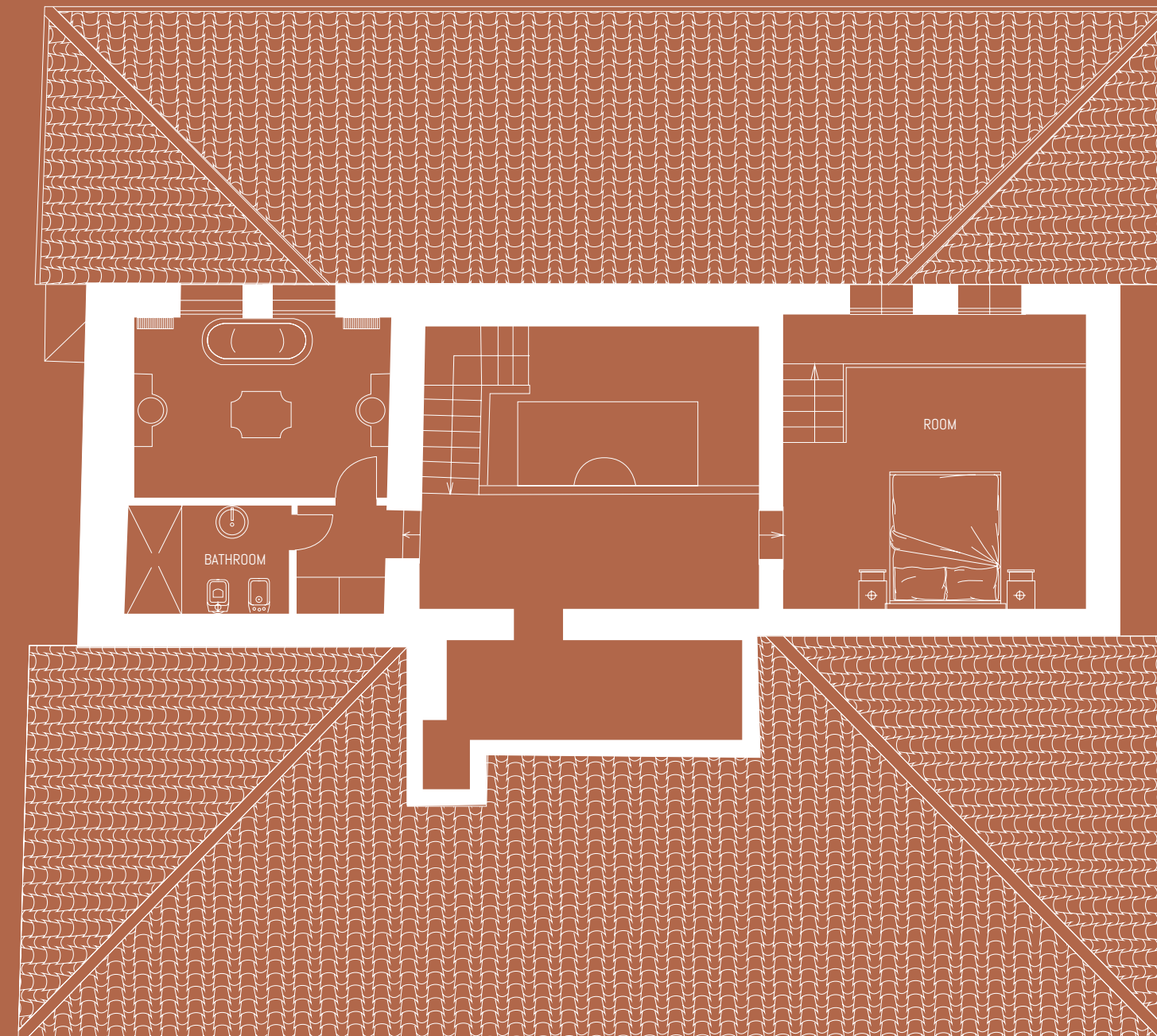
## FIRST FLOOR OF THE VILLA

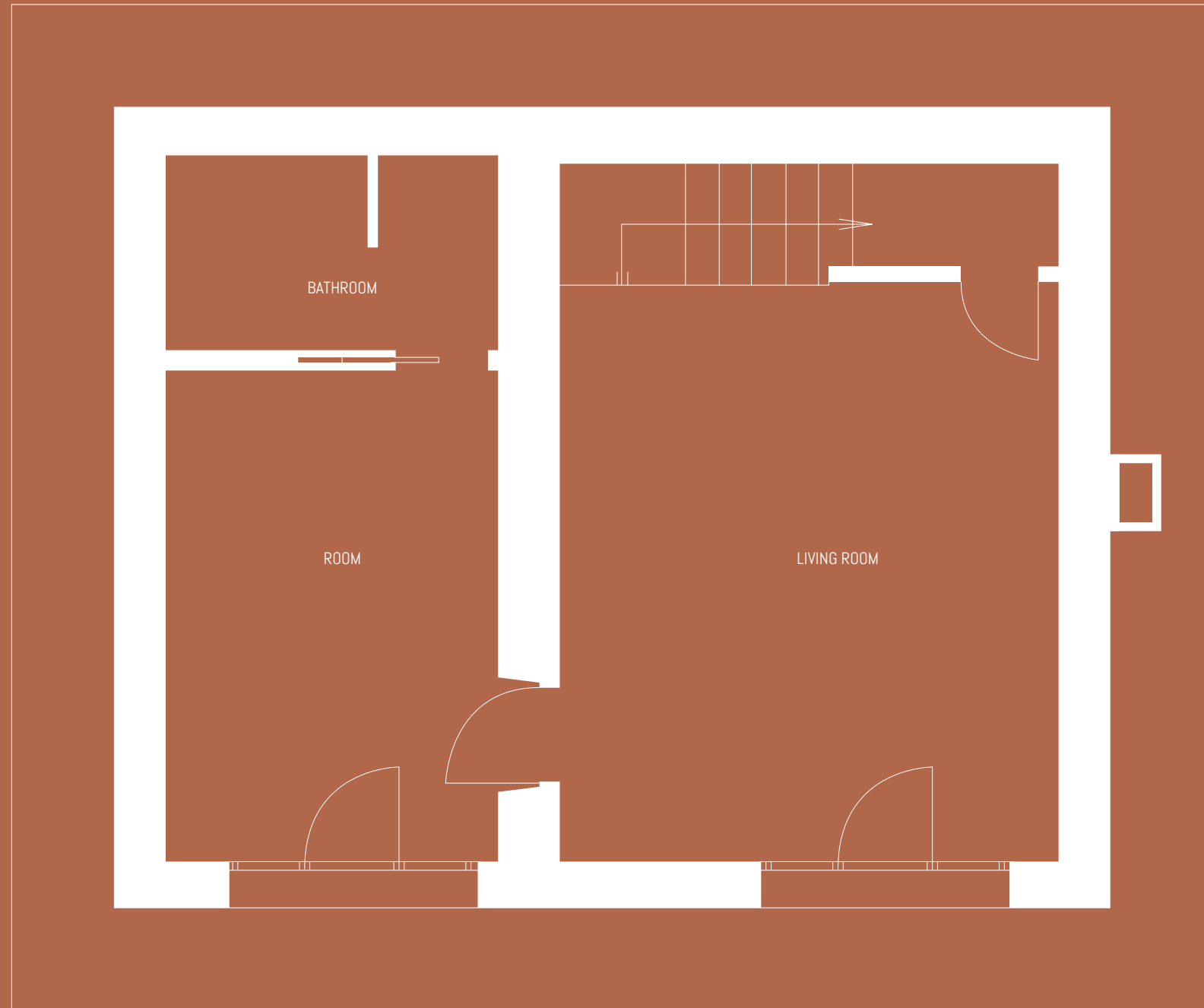
- 4 double bedrooms with en-suite bathrooms



## SECOND FLOOR OF THE VILLA

- Double bedroom
- Bathroom





## FIRST FLOOR OF THE COTTAGE

- 2 Double bedrooms
- 2 Bathrooms



## GROUND FLOOR OF THE COTTAGE

- Double bedrooms
- Bathroom
- Living room

# VIESCA

TOSCANA

[info@viescatoscana.com](mailto:info@viescatoscana.com)

+39 055.8615537

+39 366 7709600

+39 340 8825513 

VIESCA - IL BORRO TOSCANA

Via Pistelli, 75 - Località Viesca

50066 Reggello (FI)

[www.viescatoscana.com](http://www.viescatoscana.com)

 [@viescatoscana](https://www.instagram.com/viescatoscana)